

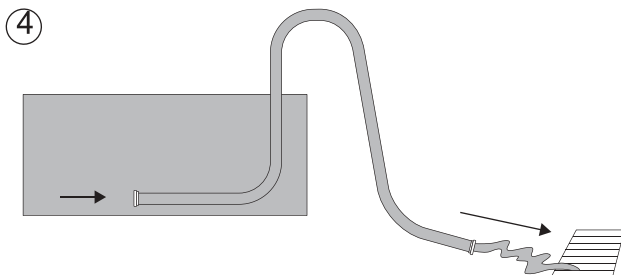
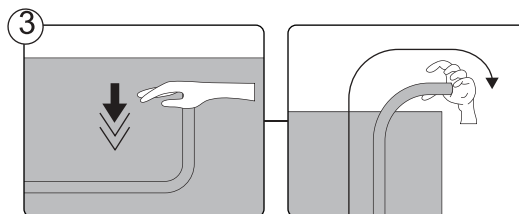
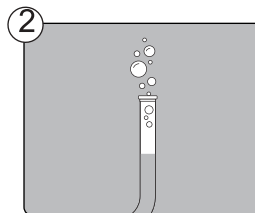
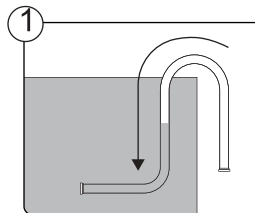


Draining Instructions

For draining, follow the illustrations below. Drawings are for illustration purposes only. May not reflect actual product. Not to scale.

Before draining your pool water, make sure you are draining it away from the house and any objects subject to water damage. Check local regulations for drainage bylaws.

1. Using a pool hose (not included), slowly immerse one end into the water along the side of the pool until the whole hose is under water.
2. Hold the hose under the water until the bubbles stop to make sure all air has been discharged from the hose.
3. Cover one end of the hose and slowly remove it from the water. Keep it covered while moving the exposed end to the desired draining location.
- **IMPORTANT:** when choosing your hose, please make sure it is long enough to reach the desired draining location, with one end still submerged in the pool.
4. Remove your hand, and water will begin draining.



Helpful Tip: these pools are intended to stay up year-round, without being fully drained. If draining for colder temperatures, refer back to [Winterization Instructions](#) for how much water to remove from the pool.

Water can be drained down to approximately 10 cm above the pool floor, or you can stop draining your pool by resubmerging the hose, and slowly extracting it back out without covering the end with your hand.

If you plan to take the pool down for long-term storage, the remaining 10 cm of water can be emptied after the pool has been disassembled (following the reverse of the directions in the Installation Instructions).