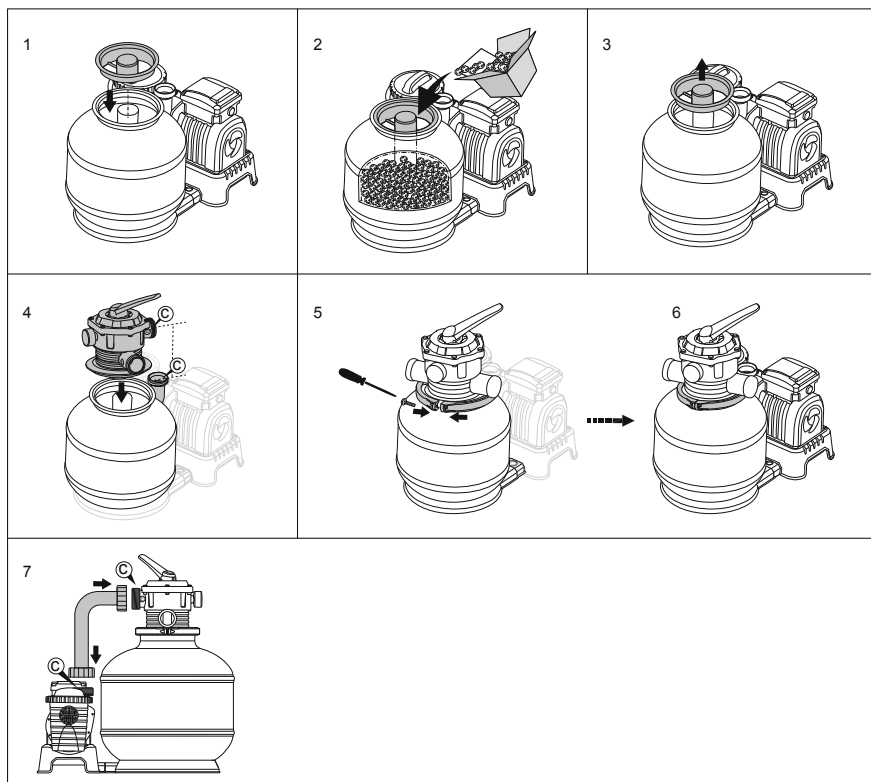
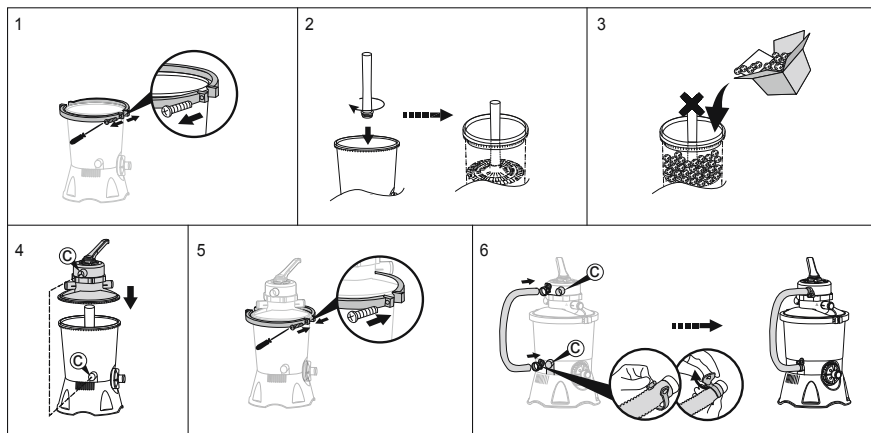


OWNER'S MANUAL

58760E Polyphere

INSTALLATION:



IMPORTANT NOTES:

1. Backwash function of sand filter is not applicable.
2. At the beginning of the new season, check the status of the material and filtration efficiency, evaluating if a replacement is needed.

NOTE: Drawings for illustration purposes only. May not reflect actual product. Not to scale.

NOTE: Flowclear™ Polysphere can also be used with other sand filters, use 0.06 lbs (28 g) Flowclear™ Polysphere to replace 2.20 lbs (1 kg) sand.

MAINTENANCE:



YOU MUST ENSURE THE PUMP IS UNPLUGGED BEFORE ANY MAINTENANCE

1. Do not use washing machine to wash Flowclear™ Polysphere.
2. Hand wash only; if Flowclear™ Polysphere remains soiled or discolored, it needs to be replaced.
3. We suggest to check the status of Flowclear™ Polysphere every 4 weeks, and if needed, wash them by hand.

©2023 Bestway Inflatables & Material Corp.

All rights reserved

Trademarks used in some countries under license from Bestway Inflatables & Material Corp., Shanghai, China

Exported by Bestway (Hong Kong) International Ltd./Bestway Enterprise Company Limited

Suite 713, 7/Floor, East Wing, Tsim Sha Tsui Centre, 66 Mody Road, Kowloon, Hong Kong

Distributed in North America by Bestway (USA) Inc., 3435 S. McQueen Road, Chandler, AZ 85286, United States of America

Tel: +86 21 69135588

www.bestwayusa.com

Bestway