




# OWNER'S MANUAL

## IMPORTANT SAFETY INSTRUCTIONS

**Read and Follow All Safety Information and Instructions. Keep for future reference. Failure to follow these warnings and instructions can result in serious injury or death to users, especially children.**

⚠ WARNING	⚠ WARNING	⚠ WARNING
		
Children under 5, especially toddlers are at highest risk of drowning. Clearly watch children who are in or near this pool. Empty pool or prevent access when not in use.	Keep all electrical lines, radios, speakers, and other electrical devices away from pool. Do not place pool near or under overhead electrical lines.	You can break your neck and be paralyzed!

### Prevent Young Children From Drowning:

- Install fencing or approved barrier around all sides of pool.
- State or local laws or codes may require fencing or other approved barriers.
- Check state or local laws and codes before setting up pool.
- Drowning occurs silently and quickly. Assign an adult to supervise pool and wear provided water watcher tag.
- Keep children in your direct sight when they are in or near pool and when you are filling and emptying pool.
- When searching for a missing child, check pool first, even if you think your child is in the house.
- Pool presents a drowning hazard even during filling and draining of the pool. Maintain constant supervision of children and do not remove any safety barriers until the pool is completely empty and stowed away.
- Refer to the list of barrier recommendations and guidelines as described in CPSC Publication No.362.
- Assign an adult to be responsible for watching children in the pool. Give this person a "water watcher" tag and ask that they wear it the entire time they are in charge of supervising children in the pool. If they need to leave for any reason, ask this person to pass the "water watcher" tag and the supervision responsibility to another adult.

### Prevent Young Children From Gaining Access to Pool:

- Remove pool ladders before leaving pool. Toddlers can climb ladder and get into pool.
- Position furniture away from pool so that children cannot climb and gain access to pool.
- When leaving pool, remove floats and toys from pool that might attract a child.

### Be Prepared to Respond to an Emergency:

- Keep a working phone and list of emergency numbers near pool.
- Become certified in cardiopulmonary resuscitation (CPR) so you can respond to an emergency.

### Diving Risk:

- Do not dive into the pool. Diving into shallow water can result in a broken neck, paralysis, or death.

### Electroshock Risk:

- Keep all electrical lines, radios, speakers and other electrical appliances away from the pool.
- Do not place pool near or under overhead electrical lines.

### Safety Barrier Guidelines for Residential Swimming Pool

#### Section I: Outdoor swimming pool

An outdoor swimming pool, including an in-ground, above ground, or on-ground pool, hot tub, or spa, should be provided with a barrier which complies with the following:

1. The top of the barrier should be at least 48 inches above grade measured on the side of the barrier which faces away from the swimming pool. The maximum vertical clearance between grade and the bottom of the barrier should be 4 inches measured on the side of the barrier which faces away from the swimming pool. Where the top of the pool structure is above grade, such as an above ground pool, the barrier may be at ground level, such as the pool structure, or mounted on top of the pool structure. Where the barrier is mounted on top of the pool structure, the maximum vertical clearance between the top of the pool structure and the bottom of the barrier should be 4 inches.
2. Openings in the barrier should not allow passage of a 4-inch diameter sphere.
3. Solid barriers, which do not have openings, such as a masonry or stone wall, should not contain indentations or protrusions except for normal construction tolerances and tooling masonry joints.
4. Where the barrier is composed of horizontal and vertical members and the distance between the tops of the horizontal members is less than 45 inches, the horizontal members should be located on the swimming pool side of the fence. Spacing between vertical members should not exceed 1-3/4 inches in width. Where there are decorative cutouts, spacing within the cutouts should not exceed 1-3/4 inches in width.
5. Where the barrier is composed of horizontal and vertical members and the distance between the tops of the horizontal members is 45 inches or more, spacing between vertical members should not exceed 4 inches. Where there are decorative cutouts, spacing within the cutouts should not exceed 1-3/4 inches in width.

6. Maximum mesh size for chain link fences should not exceed 1-3/4 inch square unless the fence is provided with slats fastened at the top or the bottom which reduce the openings to no more than 1-3/4 inches.
7. Where the barrier is composed of diagonal members, such as a lattice fence, the maximum opening formed by the diagonal members should be no more than 1-3/4 inches.
8. Access gates to the pool should comply with Section I, Paragraphs 1 through 7, and should be equipped to accommodate a locking device. Pedestrian access gates should open outward, away from the pool, and should be self-closing and have a self-latching device. Gates other than pedestrian access gates should have a self-latching device. Where the release mechanism of the self-latching device is located less than 54 inches from the bottom of the gate, (a) the release mechanism should be located on the pool side of the gate at least 13 inches below the top of the gate and (b) the gate and barrier should have no opening greater than 1/2 inch within 18 inches of the release mechanism.
9. Where a wall of a dwelling serves as part of the barrier, one of the following should apply:

- (a) All doors with direct access to the pool through that wall should be equipped with an alarm which produces an audible warning when the door and its screen, if present, are opened. The alarm should sound continuously for a minimum of 30 seconds within 7 seconds after the door is opened. Alarms should meet the requirements of UL2017 General-Purpose Signaling Devices and Systems, Section 77. The alarm should have a minimum sound pressure rating of 85 dBA at 10 feet and the sound of the alarm should be distinctive from other household sounds, such as smoke alarms, telephones, and door bells. The alarm should automatically reset under all conditions. The alarm should be equipped with manual means, such as touchpads or switches, to temporarily deactivate the alarm for a single opening of the door from either direction. Such deactivation should last for no more than 15 seconds. The deactivation touchpads or switches should be located at least 54 inches above the threshold of the door.
  - (b) The pool should be equipped with a power safety cover which complies with ASTM F1346-91 listed below.
  - (c) Other means of protection, such as self-closing doors with self-latching devices, are acceptable so long as the degree of protection afforded is not less than the protection afforded by (a) or (b) described above.
10. Where an above ground pool structure is used as a barrier or where the barrier is mounted on top of the pool structure, and the means of access is a ladder or steps, then (a) the ladder to the pool or steps should be capable of being secured, locked or removed to prevent access, or (b) the ladder or steps should be surrounded by a barrier which meets Section I, Paragraphs 1 through 9. When the ladder or steps are secured, locked, or removed, any opening created should not allow the passage of a 4-inch diameter sphere.

### Section II: Barrier Locations

Barriers should be located so as to prohibit permanent structures, equipment or similar objects from being used to climb the barriers.

### PRODUCT DESCRIPTION

Item	Part
53052E	• 1 Pool • 1 Slide • 1 Dolphin • 2 Clown fish • 1 Octopus • 2 Rings • Repair patch
53067E	• 1 Pool • 1 Slide • Repair patch • 1 Ring • 4 Play balls • 3 Fishes
53068E	• 1 Pool • 1 Slide • Repair patch • 2 Rings • 4 Play balls • 6 Bowling pins • 1 Shelf
53069E,53139E	• 1 Pool • 1 Slide • Repair patch • 1 Ring • 4 Play balls • 1 Water blob
53071E,53092E	• 1 Pool • 1 Slide • Repair patch
53079E	• 1 Pool • 1 Slide • Repair patch • 1 Shark bop bag
53081E,53089E,53114E	• 1 Pool • Repair patch
53093E	• 1 Pool • 1 Slide • Repair patch • 4 Rings • 10 Play balls
53097E	• 1 Pool • 1 Slide • 1 Inflatable star ring • 1 Magic wand • 6 Play balls • Repair patch
53117E,53150E	• 1 Pool • 1 Slide • 1 Drum • 2 Inflatable rings • 1 Microphone • 6 Play balls • Repair patch
53118E	• 1 Pool • 1 Horse crutch • 1 Horse roof ring toss • 1 Slide • Repair patch
53126E	• 1 Pool • 1 Bop bag • 1 Moon ring toss • 1 Earth frisbee • 1 Planet frisbee • 4 Rings • Repair patch.
91097E	• 1 Pool • 1 Star rings • 6 Play balls • Repair patch
98793E	• 1 Pool • 3 Rings • 6 Play balls • Repair patch

Refer to the item name or number stated on the packaging. Packaging must be read carefully and kept for future reference.

### PREPARATION

Installation of small swimming pool usually takes only 10 minutes with 1 people

#### Recommendations regarding placement of the pool:

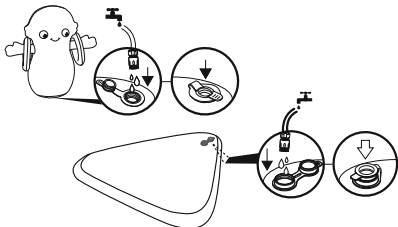
- Do not install the pool on a slope or inclined surfaces, on soft or loose soil conditions (such as sand or mud), or on an elevated surface such as a deck, platform or balcony, or where the pool may collapse under the weight of the filled pool.
- It is essential the pool is set up on solid, level ground. If the pool is set up

- on uneven ground it can cause collapse of the pool and flooding, causing serious personal injury and/or damage to personal property.
- Do not set up on driveways, decks, platforms, gravel or asphalt. Ground should be firm enough to withstand the pressure of the water, mud, sand, soft / loose soil or tar are not suitable.
  - The ground must be cleared of all objects and debris including stones and twigs.
  - Check with your local city council for by-laws relating to fencing, barriers, lighting and safety requirements and ensure you comply with all laws.

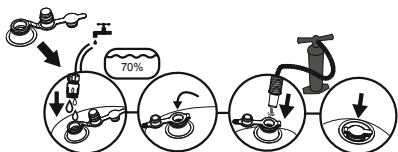
#### ASSEMBLY

### **WARNING: Adult assembly required.**

1. Open the water valve to fill water in the water chamber  
(Only for product with water chamber)

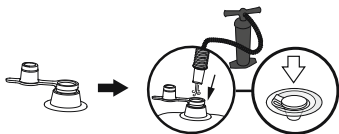


2. Open the 3-interconnecting valve to fill water in the water chamber and close the first cap, then inflate the same chamber with air pump (not included). Close the valve after inflation and press it into the air chamber.  
(Only for product with 3-interconnecting valve)

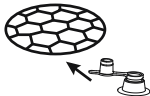


3. Open the safety valves and inflate the parts one by one. Be sure to close the valves after inflation. Air pump is not included.

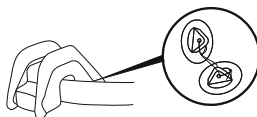
**NOTE:** Do not over inflate. Do not use either an air compressor or compressed air.



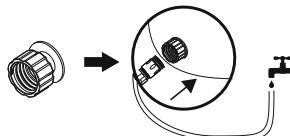
**NOTE:** For inflatable floor, the air valve is on the bottom side of the product.



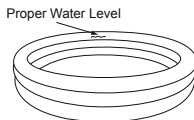
4. Connect the slide to the pool by tighten the rope  
(Only for product with detachable slide).



5. Connect your garden hose to the Hose Adapter.



6. Slowly fill the pool to a proper water level, if there is a fill line, reach but do not exceed the fill line on the pool's interior. **DO NOT OVERFILL** as this could cause the pool to collapse.  
**ATTENTION:** Do not leave pool unattended while filling with water.



**NOTE:** All drawings for illustration purpose only. May not reflect actual product. Not to scale.

#### EMPTY THE POOL

1. Check local regulations for specific directions regarding disposal of swimming pool water.
2. Deflate all the air chambers, at the same time push down the wall of the pool to release the water. Make sure release all the water in 20 minutes.

**NOTE:** Drain by adult only!

#### POOL MAINTENANCE

**WARNING:** If you do not adhere to the maintenance guidelines covered herein, your health might be at risk, especially that of your children.

- Change the water of pools frequently (particularly in hot weather) or when noticeably contaminated, unclear water is harmful to the user's health.
- Please contact your local retailer to obtain chemicals to treat the water in your pool. Be sure to follow the chemical manufacturer's instructions.
- Proper maintenance can maximize the life of your pool.
- See packaging for water capacity.

#### CLEANING AND STORAGE

1. After use, use a damp cloth to gently clean all surfaces.

**NOTE:** Never use solvents or other chemicals that may damage the product.

2. Air dry the pool, once pool is completely dry, fold pool carefully and put back to its original packing. If pool is not completely dry, mould may result and will damage the pool.
3. Store in a cool, dry place and out of children's reach.
4. Check the product for damage at the beginning of each season and at regular intervals when in use.

#### REPAIR

If your pool is damaged, use the repair patch.

1. Complete deflate the product damaged area.
2. Clean and dry the damaged area.
3. Apply the repair patch and smooth out any air bubbles.

©2022 Bestway Inflatables & Material Corp.

All rights reserved

Trademarks used in some countries under license from Bestway Inflatables & Material Corp., Shanghai, China

Exported by Bestway (Hong Kong) International Ltd./Bestway Enterprise Company Limited

Suite 713, 7/Floor, East Wing, Tsim Sha Tsui Centre, 66 Mody Road, Kowloon, Hong Kong

Distributed in North America by Bestway (USA) Inc., 3435 S. McQueen Road, Chandler, AZ 85286, United States of America

Tel: +86 21 69135588

[www.bestwayusa.com](http://www.bestwayusa.com)

**Bestway**