

Bestway®



©2024 Bestway Inflatables & Material Corp. All rights reserved.

Trademarks used in some countries under license from / Manufactured by Bestway Inflatables & Material Corp.,

No. 208 Jin Yuan Wu Road, Shanghai, 201812, China (Tel: +86 21 69135588).

Represented in North America by Bestway (USA) Inc., 3435 S. McQueen Road, Chandler, AZ 85286, United States of America.

www.bestwayusa.com



OWNER'S MANUAL

58392E/58671E Filter Pump



Visit the Bestway YouTube channel

SAFETY INFORMATION

Carefully read, understand, and follow all information in this user manual before installing and using the Filter Pump. These warnings, instructions, and safety guidelines address some common risks of water filtration systems, but they cannot cover all risks and dangers in all cases. Always use caution, common sense, and good judgment when enjoying any water activity. Retain this information for future use. In addition, the following information can be supplied depending on the Filter Pump type. Keep the instructions in a safe place. If instruction is missing, search it on the website www.bestwayusa.com/support.

IMPORTANT SAFETY INSTRUCTIONS

When installing and using this electrical equipment, basic safety precautions should always be followed, including the following:

READ AND FOLLOW ALL INSTRUCTIONS

WARNING - TO REDUCE THE RISK OF INJURY, do not permit children to use this product unless they are closely supervised at all times.

WARNING - RISK OF ELECTRIC SHOCK. Connect only to a grounding type receptacle. This product is provided with a ground-fault circuit-interrupter. If replacement of the plug is needed, use only identical replacement parts.

WARNING: The unit is provided with a ground-fault circuit-interrupter (**GFCI**). To test the **GFCI**, push the test button. The **GFCI** should interrupt power. Push the reset button. Power should be restored. If the **GFCI** fails to operate in this manner, the **GFCI** is defective. If the **GFCI** interrupts power to the pump without the test button being pushed, a ground current is flowing, indicating the possibility of an electric shock. Do not use this pump. Disconnect the pump and have the problem corrected by a qualified service representative before using.

CAUTION - To reduce the risk of electric shock the pool must be installed no closer than 6 feet (1.8 m) from any electrical outlet. Do not place portable appliances closer than 5 feet (1.5 m) from the pool.

WARNING: The pump is not intended to be bonded to the equipotential bonding grid. **DO NOT BURY CORD**. Locate cord to minimize abuse from lawn mowers, hedge trimmers, and other equipment.

WARNING - To reduce the risk of electric shock, replace damaged cord immediately.

SAFETY INFORMATION

WARNING - To reduce the risk of electric shock, do not use extension cord to connect unit to electric supply; provide a properly located outlet.

CAUTION - This pump is for use with storable pools only. Do not use with permanently-installed pools. A storable pool is constructed so that it is capable of being readily disassembled for storage and reassembled to its original integrity. A permanently-installed pool is constructed in or on the ground or in a building such that it cannot be readily disassembled for storage.

NOTE:

- THERMALLY PROTECTED MOTOR.
- FOR USE WITH SWIMMING POOLS ONLY.

CAUTION: TO ENSURE CONTINUED PROTECTION AGAINST SHOCK HAZARD, USE ONLY IDENTICAL REPLACEMENT PARTS WHEN SERVICING.

WARNING: RISK OF ELECTRIC SHOCK. CONNECT ONLY TO A GROUNDING TYPE RECEPTACLE.

CAUTION: THIS PUMP IS FOR USE WITH STORABLE POOLS ONLY - DO NOT USE WITH PERMANENTLY-INSTALLED POOLS.

CAUTION: CONNECT ONLY TO GROUNDING TYPE RECEPTACLE PROTECTED BY A CLASS A GROUND FAULT CIRCUIT INTERRUPTER.

CAUTION: FOR CONTINUED PROTECTION AGAINST POSSIBLE ELECTRIC SHOCK THIS UNIT IS TO BE MOUNTED TO THE BASE IN ACCORDANCE WITH THE INSTALLATION INSTRUCTIONS.

WARNING - RISK OF ELECTROCUTION

- Connect Only To Properly Grounded Outlet. Do Not Remove Ground Pin.
- Inspect Cord Before Using - Do Not Use If Cord Is Damaged.
- Keep Ground-Fault Circuit-Interrupter Dry And Off The Ground.
- Do Not Touch Plug With Wet Hands.
- Double Insulated - When Servicing Use Only Identical Replacement Parts.
- Read Instruction Manual Before Using.

DO NOT REMOVE THIS TAG

SAVE THESE INSTRUCTIONS.

This device complies with part 15 of the FCC Rules. Operation is subject to the following two conditions: (1) This device may not cause harmful interference, and (2) this device must accept any interference received, including interference that may cause undesired operation.

WARNING: Any changes or modifications to this unit not expressly approved by the party responsible for compliance could void the user's authority to operate the equipment.

SAFETY INFORMATION

NOTE: This equipment has been tested and found to comply with the limits for a Class B digital device, pursuant to part 15 of the FCC Rules. These limits are designed to provide reasonable protection against harmful interference in a residential installation. This equipment generates, uses and can radiate radio frequency energy and, if not installed and used in accordance with the instructions, may cause harmful interference to radio communications. However, there is no guarantee that interference will not occur in a particular installation. If this equipment does cause harmful interference to radio or television reception, which can be determined by turning the equipment off and on, the user is encouraged to try to correct the interference by one or more of the following measures:

- Reorient or relocate the receiving antenna.
- Increase the separation between the equipment and receiver.
- Connect the equipment into an outlet on a circuit different from that to which the receiver is connected.
- Consult the dealer or an experienced radio/TV technician for help.

POOL SUCTION FITTING INSTRUCTIONS

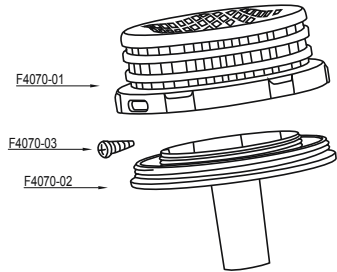
When installing and using this equipment, basic safety precautions shall always be followed, including the following:

IMPORTANT SAFETY INSTRUCTIONS READ, FOLLOW, AND UNDERSTAND ALL INSTRUCTIONS AND WARNINGS.

- Any modification that increases the flow rate of the circulation system shall require re-evaluation of the cover/grate and sump to ensure that the flow rating of the Suction Outlet Fitting Assembly (SOFA) is not exceeded.
- Missing, broken, or cracked cover/grates, sumps, mud-frames, or any other SOFA component shall be replaced before bathers are allowed to use the pool.
- Loose cover/grates shall be reattached before bathers are allowed to use the pool.
- Replace suction fittings every 2 years.
- The use of adhesives or other attachment methods that prevent access to suction piping or SOFA components requiring periodic servicing is prohibited.
- Refer to the following diagram for each SOFA component part instructions:
 - Any field modification made to a SOFA not authorized by the manufacturer's installation instructions shall void the SOFA certification.
 - No modification shall be made to a SOFA structure or flow path unless the new configuration has been certified as new SOFA.
 - Cover/grates and all other SOFA components shall be replaced at or before the end of their service life and that service life begins the month and year in which a SOFA component is installed with or without water.
- Winterizing instructions. Dry the suction fittings completely, and store the product in a dry room at a storage temperature of 50°F / 10°C ~ 100°F / 38°C.
- Use the screwdriver (not included) to disassemble the suction fitting to clean or service.
- Cover/grate, including fasteners, shall be observed for damage or tampering each operational day.
- Missing, broken, or cracked cover/grates shall be replaced before bathers are allowed to use the pool.

SAFETY INFORMATION

- Loose cover/grates and associated components shall be reattached before bathers are allowed to use the pool.
- SOFA components and fastener receptacles shall be clean and free of debris or obstructions during installation of cover/grate and fasteners.
- Remember to hand-check cover/grate for snugness to the sump/frame after installation.
- Before using the product, please check the integrity of the head of the suction fitting. If the product is broken, cracked, or the color has significantly faded, please do not use it.
- All SOFAs shall be installed in accordance with the manufacturer's installation instructions.
- No modification shall be made to a SOFA structure or flow path unless the new configuration has been certified to the original SOFA.
- These SOFA-configuration specific flow ratings NOT be exceeded at any time the pool is open to bathers.
- Cover/grates, when installed, shall not protrude more than 2 in. (51 mm) from the finished surface of the pool in which the SOFA is installed.



Installation Information label (copy)

Manufacturers name:

GOLEADER INDUSTRIES (JINHUA) CO., LTD.

Cover part number: F4070

Service life of the cover: 2 Years

Cover flow rating: 38 GPM

Installer needs to fill in the balance of the information and permanently post it as near as feasible to the pump control.

Keep a copy of this information with the other important pool related documents.

Configuration and installed orientation: _____

Location: _____

Installed Date: _____

Please research and download General Certificate of Conformity through www.bestwayusa.com

SAVE THESE INSTRUCTIONS

TECHNICAL SAFETY INSTRUCTIONS

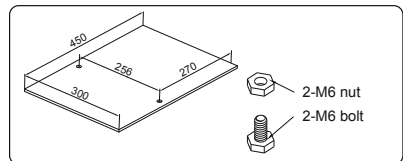
- Risk of electric shock, the pump cannot be using while people are inside the pool. If the supply cord is damaged, it must be replaced by the manufacturer, its service agent or similarly qualified persons in order to avoid a hazard.
- Using the pump with an unmatched electrical supply is dangerous and will result in catastrophic failure of pump.
- Risk of electric shock - When working with electricity, turn the electrical power off at the circuit breaker and lock breaker door. Failure to do so will result in increased risk of shock, injury and possibly death.
- Do not remove the grounding prong or modify the plug in any way. Do not use adapter plugs. Consult a qualified electrician for any questions related to the validity of your plug's grounding. Handle the pump with care. Do not pull or carry the pump by the power cord. Never pull a plug from the outlet by yanking the power cord. Keep cord free from abrasions. Sharp objects, oil, moving parts, and heat should never be exposed to the filter pump.
- Atmospheric conditions may affect the performance and life span of your filter pump. Unnecessary wear and tear may occur during periods of cold, heat and exposure to sun. Whenever possible shelter the pump from these conditions.
- Do not add chemicals in the filter pump.
- Assembly and disassembly of this product should only be performed by adults.

GFCI WARNING

- Risk of electric shock. The GFCI must be tested before each use.
- Before inserting plug into a power outlet, make sure the current rate of the power outlet is suitable for the pump.
- Do not use the pump if this test fails. For assistance, please visit the support section on our website, www.bestwayusa.com.
- To prevent the risk of electrical shock, ensure your hands are completely dry when plugging-in the Filter Pump.

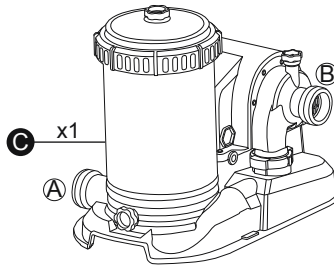
ATTACHING A BASE

The filter pump must be vertically fixed on the ground or a base made of wood or concrete before use. There should be two holes 7 mm in diameter on the base, the space between which should be 256 mm. Put filter pump on the base and attach them together by fastening the bolts and nuts. All the base parts should weigh at least over 18 kg to prevent the pump from accidentally falling.

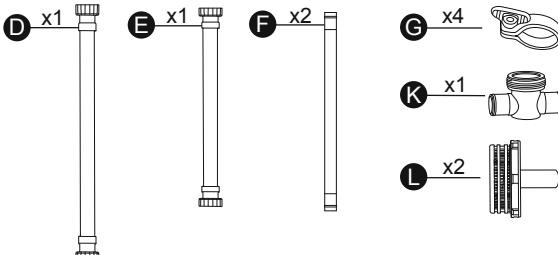


PARTS & TOOLS NEEDED

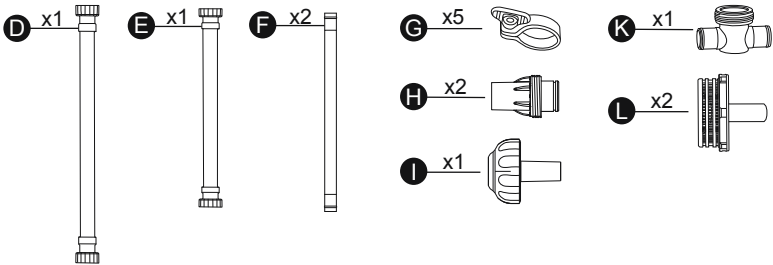
Compare the parts in your box to the parts listed in this manual. Verify that the equipment components represent the model that you had intended to purchase. If any parts are damaged or missing at the time of purchase, visit our website bestwayusa.com/support.



V1:

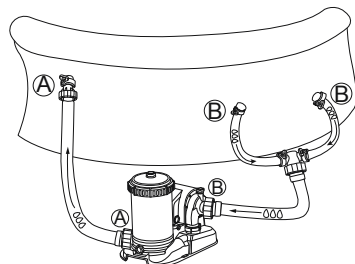
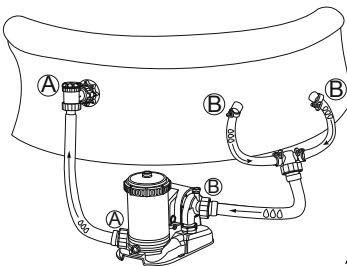


V2:



SETUP INSTRUCTIONS

OVERVIEW



SETUP INSTRUCTIONS

Choosing the Correct Location

Place the Filter Pump on a solid and level ground; it must be positioned on the same level as the base of the pool. If the Filter Pump is in an upper or lower position than the base of the pool, the performance and life span of the Filter Pump can be compromised. The pool and the Filter Pump have to be positioned in an area with adequate drainage and easy access for maintenance operations. Never place the Filter Pump in a area that may accumulate water.

Assembly Instructions

For installation instructions, scan the QR code printed on the front cover or follow the illustration below. Drawings are for illustration purposes only. May not reflect actual product. Not to scale.

Filter pump assembly can be completed without additional tools. Bestway is not responsible for damage caused to the product due to mishandling or failure to follow these instructions.

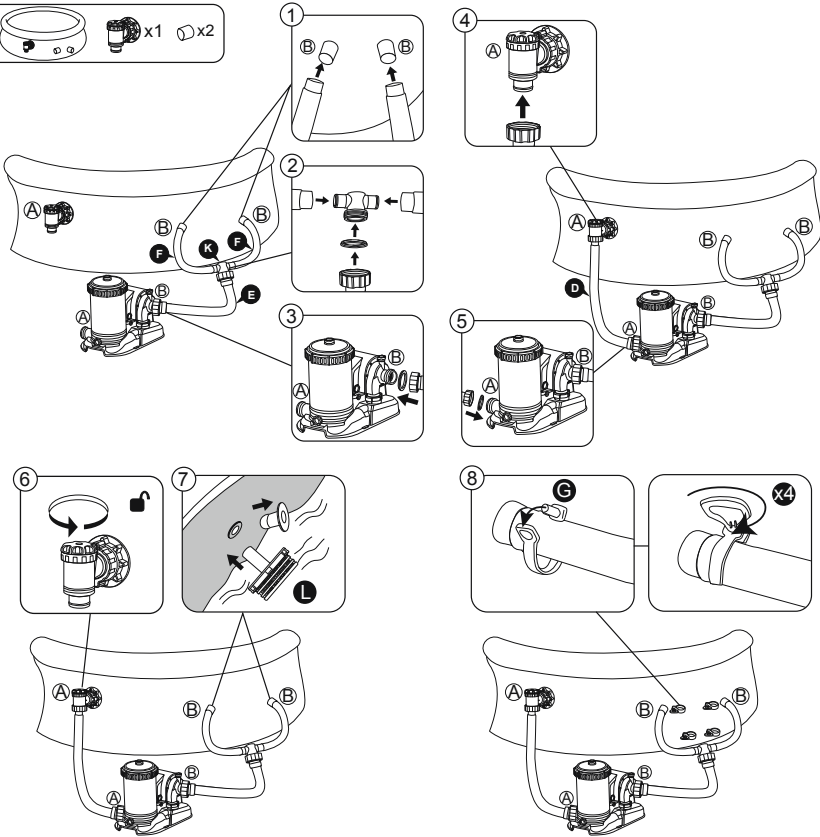
IMPORTANT: Before attaching the hose, ensure that the gasket has been installed properly on the pump.

IMPORTANT: It is imperative to check that the hydraulic connectors are not obstructed.

IMPORTANT: Do not dry run the filter pump. Make sure both the pool's inlet and outlet are open and fully covered by water. Before switching on the filter pump, perform the air discharging operation as shown. (🔧)

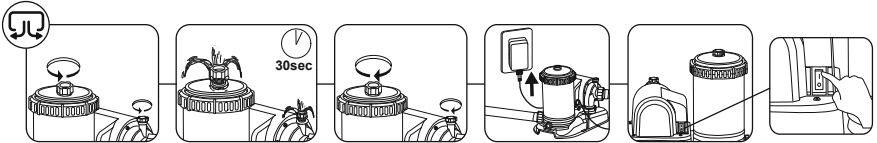


INSTALLATION

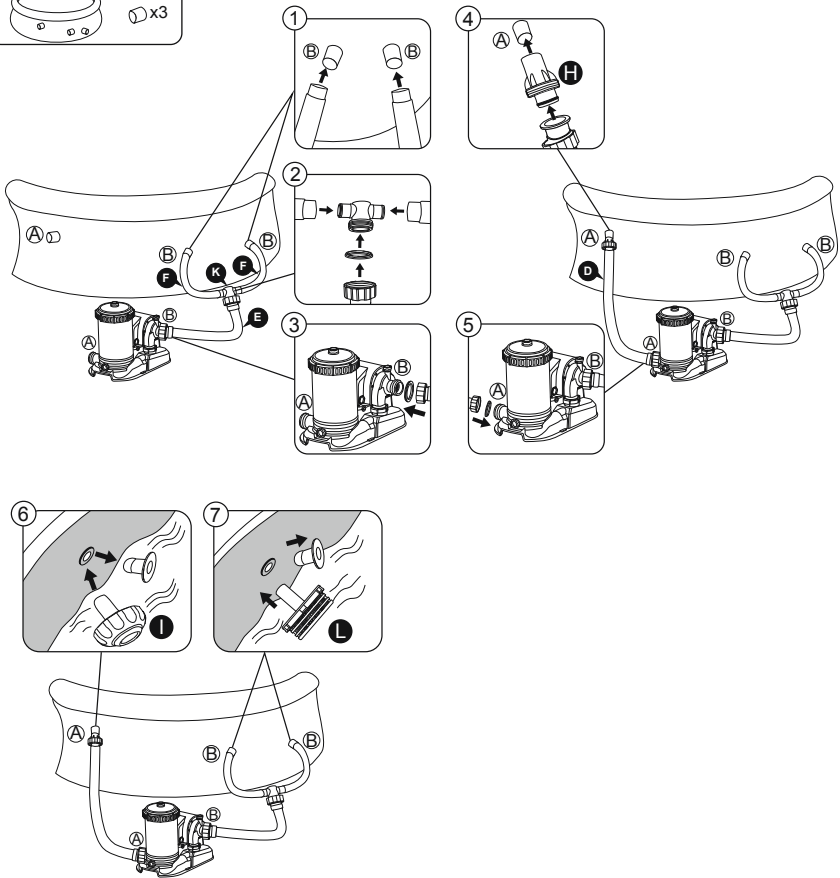
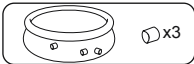




INSTALLATION

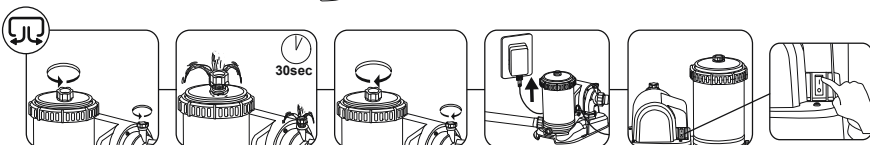
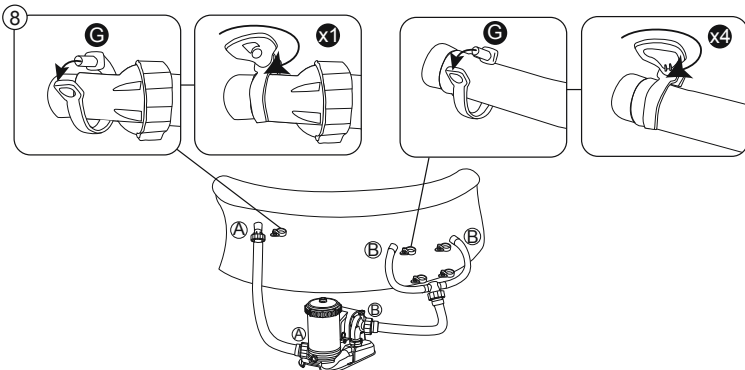
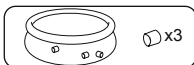


AIR DISCHARGING OPERATION: Follow these steps to discharge air before switching the filter pump on and after every maintenance operation. Omitting this operation will greatly affect the lifespan of the product.





INSTALLATION

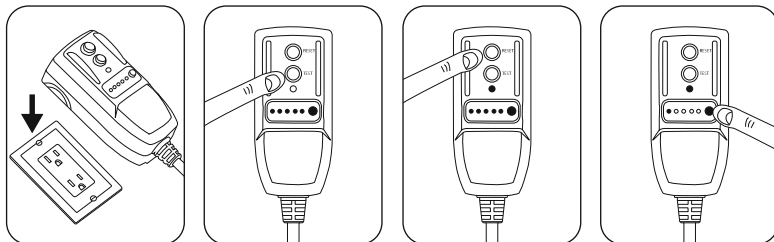
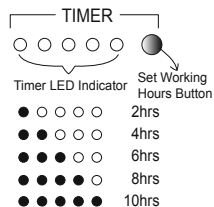


AIR DISCHARGING OPERATION: Follow these steps to discharge air before switching the filter pump on and after every maintenance operation. Omitting this operation will greatly affect the lifespan of the product.

GFCI TEST

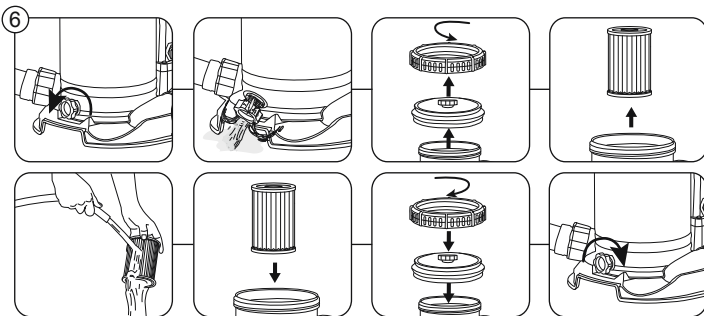
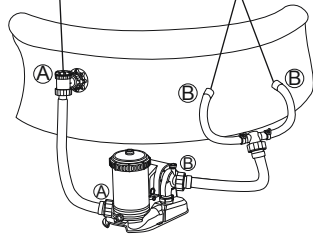
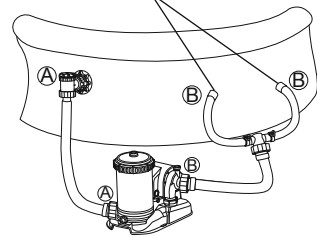
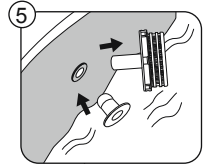
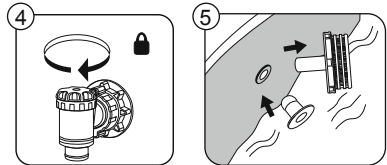
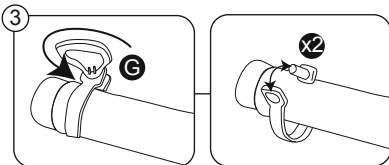
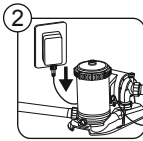
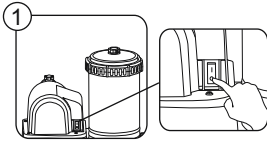
Each LED indicator represents 2 hours of working time. You can push the Set Working Hours Button to adjust the desired time.

- After setting the run time, the pump will restart automatically at the same time the following day.
- In case of a power outage or the GFCI being unplugged, the running time of the product will be reset to a 10 hour default and the previous set will be deleted.
- After finishing the working time, the GFCI goes into stand-by mode. During this time, all LED indicators will be off.
- Pushing the test button on the GFCI does not stop the timer. To stop the timer, you have to unplug the GFCI.

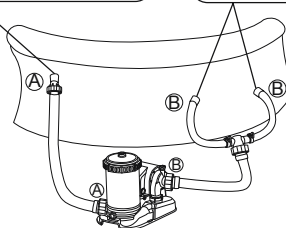
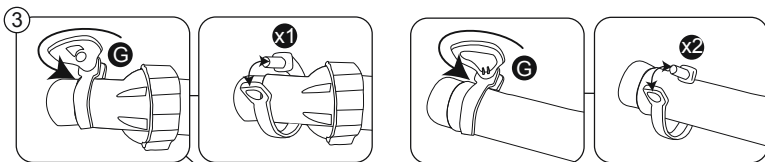
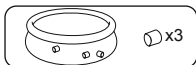
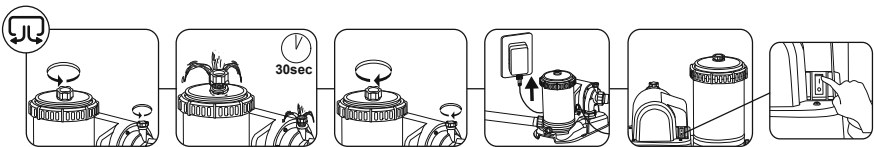
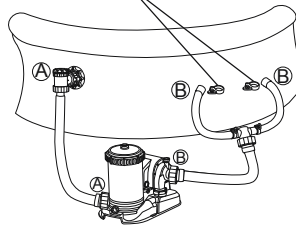
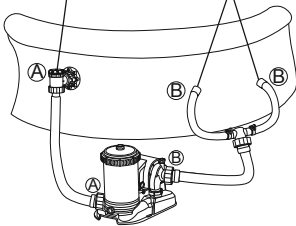
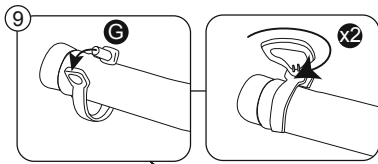
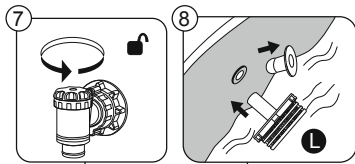


MAINTENANCE INSTRUCTIONS

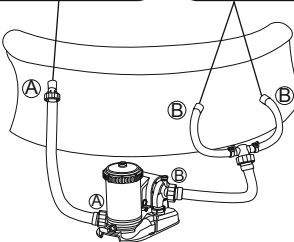
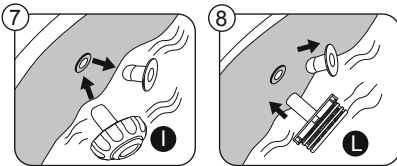
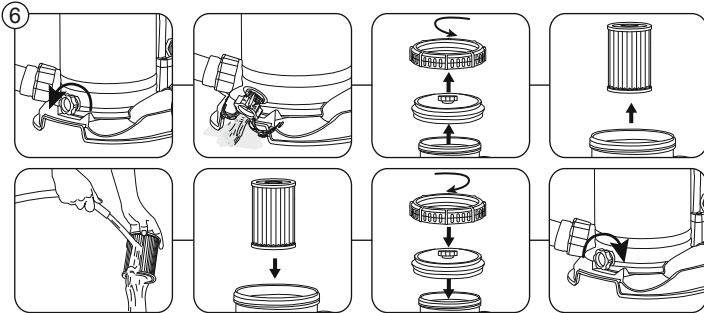
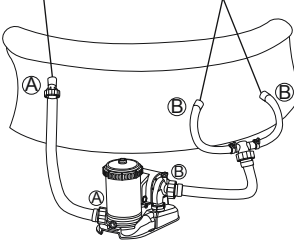
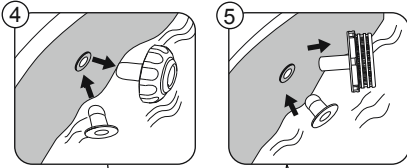
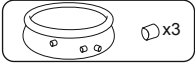
- For maintenance instructions, follow the illustrations below. Drawings are for illustration purposes only. May not reflect actual product. Not to scale.
- Make sure that the filter pump is unplugged before any maintenance.
- To optimize the filter pump performance and for sanitary reasons, we suggest replacing the filter cartridge with a new one every two weeks.



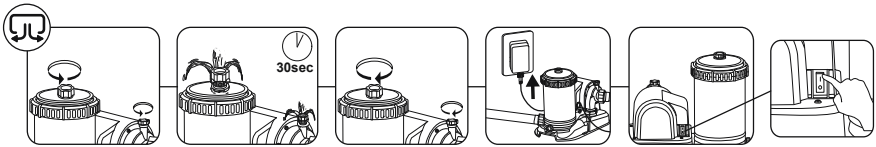
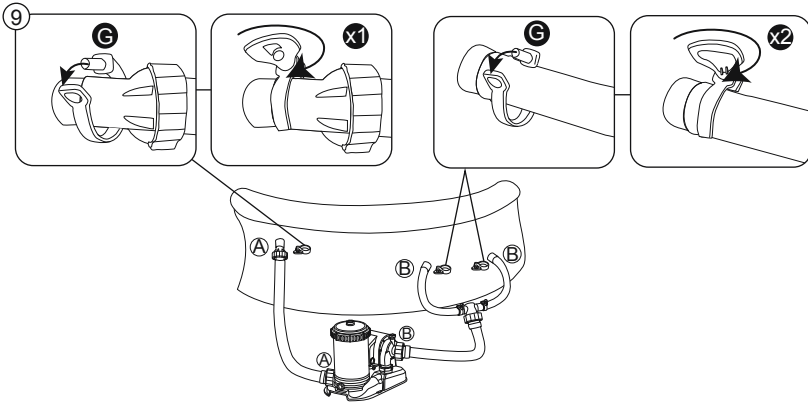
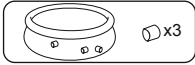
MAINTENANCE INSTRUCTIONS



MAINTENANCE INSTRUCTIONS



MAINTENANCE INSTRUCTIONS



DISASSEMBLY & STORAGE INSTRUCTIONS

- Remove all accessories; be sure that Filter Pump, hoses and debris screens are completely clean and dry before the storage. If all the parts are not completely dry, mold may result.
- Before storage, remove and dispose of the filter cartridge.
- We strongly recommend disassembling the Filter Pump when the environment temperature is below 50°F / 10°C.
- Store the Filter Pump in a dry place with a moderate temperature between 50°F / 10°C and 100°F / 38°C.

WARRANTY TERMS

- For support and product registration, please visit bestwayusa.com/support.

Bestway® | LIMITED WARRANTY

Bestway (Hong Kong) International Ltd. ("Bestway") warrants to the original end-user purchaser in the United States and Canada that the products identified in the table below ("Products") will be free from manufacturing defects for the warranty period identified for the Product in the table below. The warranty period begins on the date of purchase or the date of delivery of the Product to the original, end-user purchaser, whichever is later.

Because Bestway cannot control the quality of Products sold by unauthorized sellers, this warranty applies only to Products that were purchased from Bestway or a Bestway authorized seller in the United States and Canada, unless otherwise prohibited by law. Bestway reserves the right to reject warranty claims for Products purchased from unauthorized sellers, including unauthorized Internet sites.

This warranty does not cover any damage or defects due to:

- normal wear and tear;
- misuse, including use outside of the owner's manual guidelines;
- alteration to the product by the end-user or any third party;
- improper storage or handling, including storage or handling not in accordance with the technical recommendations in the owner's manual;
- negligence.

Bestway will repair or replace the damaged or defective part(s) only. Bestway will not repair or replace the complete set.

Purchasers of Products who wish to make a warranty claim based upon a Product defect should complete the warranty claim form found at <https://www.bestwayusa.com/ourwarranties>. You will be required to submit proof of purchase from an authorized seller. This warranty does not cover Products purchased as used or "second hand as is". Bestway reserves the right to request additional information in order to process a warranty claim, including, but not limited to, Product serial numbers or photos of the Product or parts. You may also be required to the return of the Product or certain parts for additional testing or to otherwise assist in processing your claim.

There are no warranties which extend beyond those stated herein. ANY IMPLIED WARRANTIES THAT MAY BE APPLICABLE TO PRODUCTS, INCLUDING IMPLIED WARRANTIES OF MERCHANTABILITY OR FITNESS FOR A PARTICULAR PURPOSE, ARE LIMITED IN DURATION TO THE DURATION OF THE APPLICABLE EXPRESS WARRANTY PERIOD DESCRIBED HEREIN. UNDER NO CIRCUMSTANCES SHALL BESTWAY BE LIABLE FOR ANY SPECIAL, INCIDENTAL, OR CONSEQUENTIAL DAMAGES BASED UPON BREACH OF THIS LIMITED WARRANTY, BREACH OF CONTRACT OR STRICT LIABILITY. Some States do not allow limitations on how long an implied warranty lasts, or the exclusion or limitation of incidental or consequential damages, so the above limitations or exclusions may not apply to you.

This warranty gives you specific legal rights, and you may also have other rights which vary from State to State.

If you have any questions about whether a seller is authorized or any other questions regarding this warranty, the warranty period, the warranty claim process or the status of a warranty claim, please contact us through the form at <https://bestwayusa.com/support> or write us at: Bestway Customer Service – 3435 S. McQueen Road – Chandler, AZ 85286

