

OWNER'S MANUAL

Model No. 62239

NOTICE: READ CAREFULLY BEFORE OPERATING AND SAVE THESE INSTRUCTIONS.

CAUTION: TO AVOID THE RISK OF ELECTRIC SHOCK, DO NOT EXPOSE THE PUMP TO WATER OR RAIN. KEEP THE PUMP DRY.
FOR HOUSEHOLD USE ONLY.

WARNING: Use only with Listed/Certified Information Technology (Computer) Equipment, ITE Power Supply or Class 2 Power Unit.

1. Do not use the pump continuously more than 5 minutes. It can only be used again after at least 15 minutes of cooling.
2. This device complies with part 15 of the FCC Rules. Operation is subject to the following two conditions: (1) This device may not cause harmful interference, and (2) this device must

accept any interference received, including interference that may cause undesired operation.

3. Any changes or modifications to this unit not expressly approved by the party responsible for compliance could void the user's authority to operate the equipment.

NOTE: This equipment has been tested and found to comply with the limits for a Class B digital device, pursuant to part 15 of the FCC Rules. These limits are designed to provide reasonable protection against harmful interference in a residential installation. This equipment generates, uses and can radiate radio frequency energy and, if not installed and used in accordance with the instructions, may cause harmful interference to radio communications. However, there is no guarantee that interference will not occur in a particular installation. If this equipment does

cause harmful interference to radio or television reception, which can be determined by turning the equipment off and on, the user is encouraged to try to correct the interference by one or more of the following measures:

- Reorient or relocate the receiving antenna.
- Increase the separation between the equipment and receiver.
- Connect the equipment into an outlet on a circuit different from that to which the receiver is connected.
- Consult the dealer or an experienced radio/TV technician for help.

4. The battery must be removed from the appliance before it is scrapped.
5. The appliance must be disconnected from the supply mains when removing the battery. This appliance contains battery that is non-replaceable.

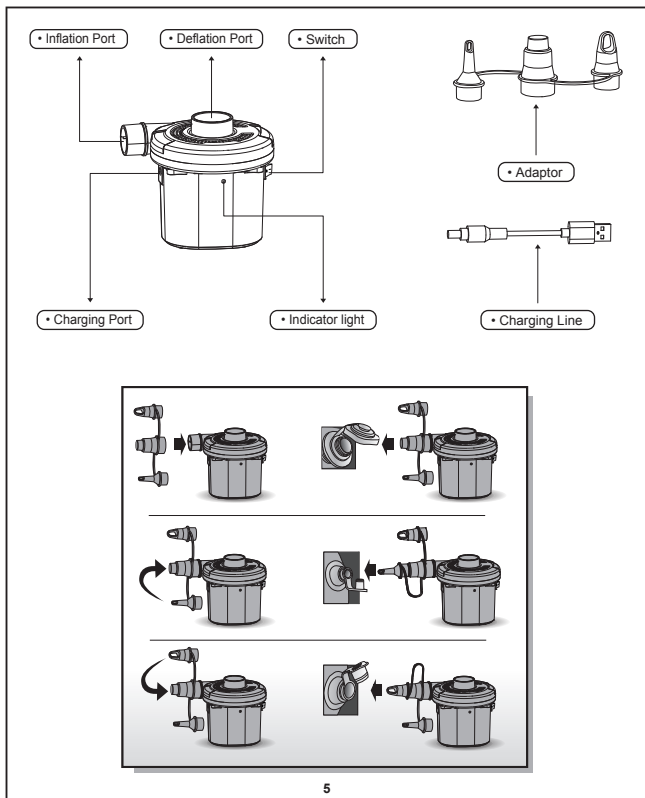
The battery is to be disposed of safely.
The appliance is only to be used with the
charging supply cord provided with the
appliance.

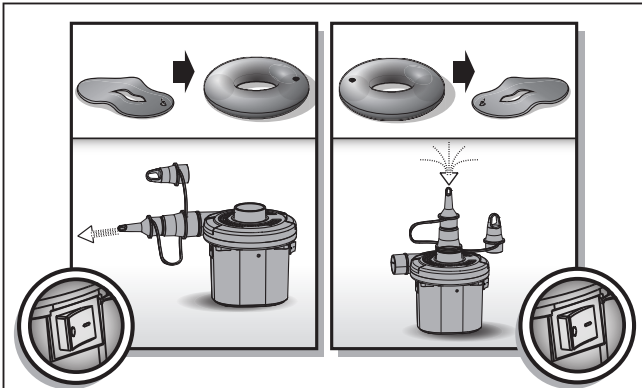
CHARGING INSTRUCTION:

1. Four rechargeable batteries included. Please charge for at least 7 - 8 hours before using for the first time so as not to affect the battery life and battery capacity.
2. The pump can only be used with provided Micro USB charging line. The charging voltage is DC5V.
3. When using charger with DC5V 0.5 A - 2 A electricity, the charging time will be around 5 hours. If other types of USB are used for charging, the charging time will be extended (up to 24 hours).
4. When charging, the indicator light is on. A red light indicates the electricity is not enough. A green light indicates the electricity is full and the unit is charging.
5. Do not block the rotation of the motor or the fan blades. Do not insert the objects into or interfere with the fan chamber.
6. The pump must be stored in a dry location at -20°C-45°C temperature. If the pump is not used for more than 12 months, the battery will discharge. The battery must be charged every 6 months.

MAINTENANCE AND STORAGE

1. Use a dry cloth to gently clean all surfaces.
2. Store in a cool, dry place and out of children's reach.





NOTE: Drawings for illustration purpose only.
May not reflect actual product. Not to scale.

©2022 Bestway Inflatables & Material Corp.

All rights reserved

Trademarks used in some countries under license from Bestway Inflatables & Material Corp., Shanghai, China

Exported by Bestway (Hong Kong) International Ltd./Bestway Enterprise Company Limited

Suite 713, 7/Floor, East Wing, Tsim Sha Tsui Centre, 66 Mody Road, Kowloon, Hong Kong

Distributed in North America by Bestway (USA) Inc., 3435 S. McQueen Road, Chandler, AZ 85286, United States of America

Tel: +86 21 69135588

www.bestwayusa.com

Bestway

303021301012