

AQUACLEAN POOL CLEANING KIT OWNER'S MANUAL

TECHNICAL SAFETY INSTRUCTIONS

IMPORTANT SAFETY INSTRUCTIONS. READ AND FOLLOW ALL INSTRUCTIONS.

WARNING: To reduce the risk of injury, do not permit children to use this product.

WARNING: Only adults should assemble and disassemble this product.

WARNING: Do not use the filter pump/sand filter while the pool is occupied.

WARNING: To avoid severe risk of injury or death, ensure the filter pump/sand filter is unplugged before any maintenance begins.

NOTE: Remove the product from the pool before placing a cover over the pool.

NOTE: Please examine and verify all components are present before use. If parts are missing, return to the purchase point to claim the missing parts.

SAVE THESE INSTRUCTIONS

SPECIFICATION

Filter Pump/Sand Filter Compatibility:	2,006 L/h (530 gal./h) flow rate and above
Pool Compatibility:	For use with all above ground pools

NOTE: Drawings for illustration purpose only. May not reflect actual product. Not to scale.

IMPORTANT: Place the vacuum into the water and fill the vacuum hose with water in order to remove all the air. Follow the 3 steps in step 4; use the vacuum only when the hose is full of water.

NOTE: We supply a Hose Adapter for your use. If there are two outlet valves on your pool, please block one of them.

POOL VACUUM OPERATION

1. Use the provided owner's manual to set up the filter pump/sand filter. Turn on the filter pump/sand filter to activate the pool vacuum.

NOTE: If there isn't any water flowing into the filter pump/sand filter, please unplug the pump, open the Air Release Valve/transparent cover of the strainer to release the air from the filter pump/sand filter.

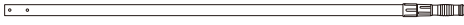
When water starts to flow out, close the Air Release Valve/transparent cover of the strainer and restart the pump.

2. When finished, unplug the filter pump/sand filter and remove any debris from the debris bag and filter cartridge.

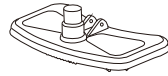
NOTE: Never use your pool vacuum without the debris bag; failure to do so may clog your filter pump/sand filter. Make sure to empty the debris bag regularly to ensure the maximum suction possible.

STORAGE

- Disassemble the product.
- Clean and dry all the parts thoroughly.
- Store in a warm, dry place.



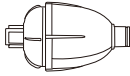
1 x1



2 x1



3 x1



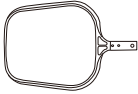
4 x1



5 x1



6 x3



7 x1

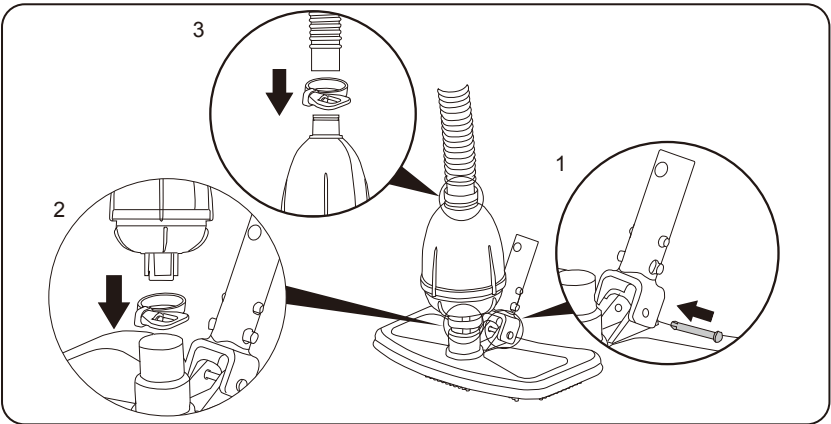


8 x1

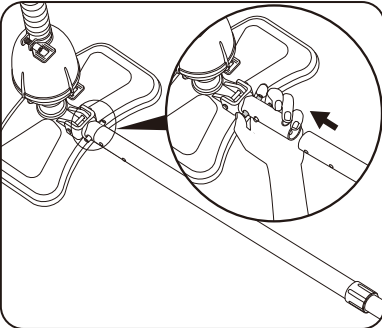


9 x1

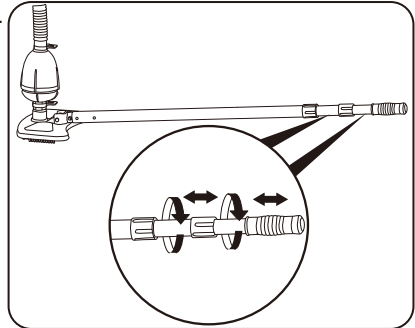
1.



2.

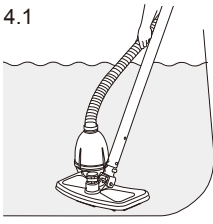


3.

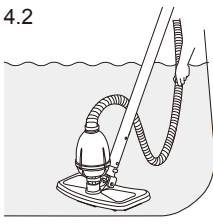


4

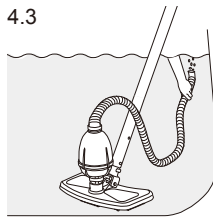
4.1



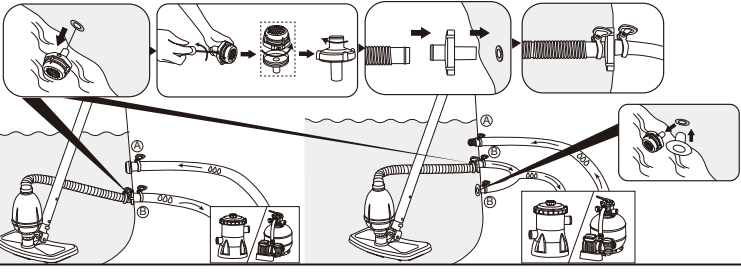
4.2



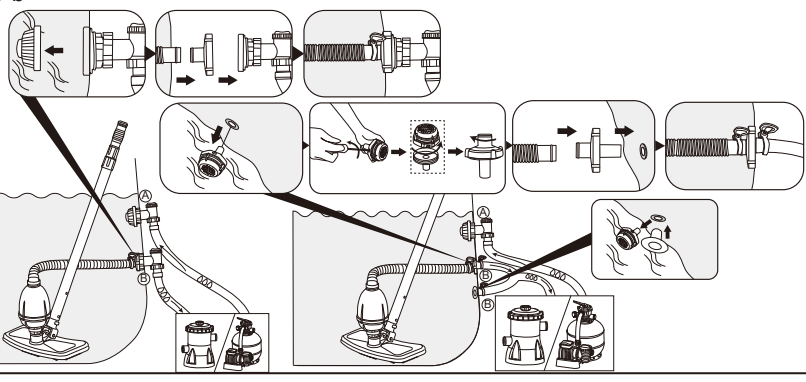
4.3



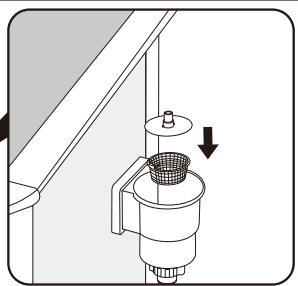
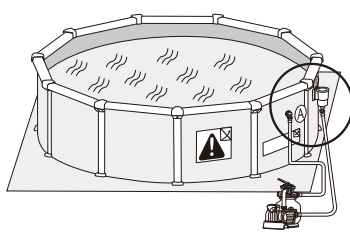
5-a



5-b

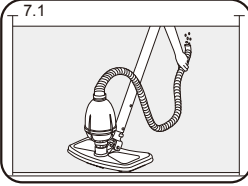


6

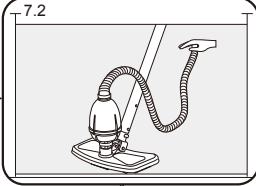


7.

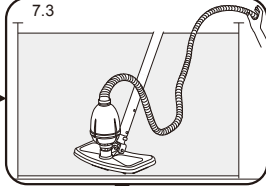
7.1



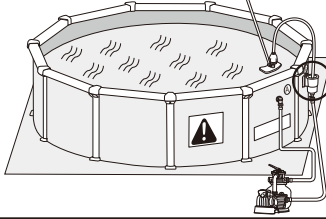
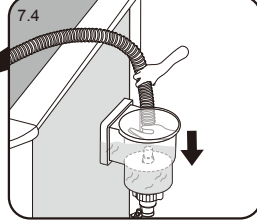
7.2



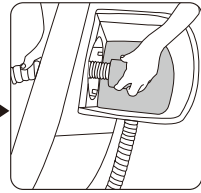
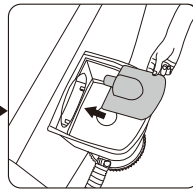
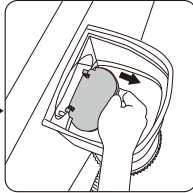
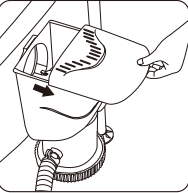
7.3



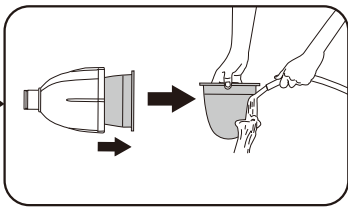
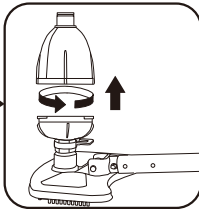
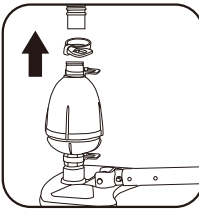
7.4



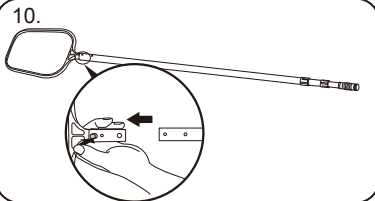
8.



9.



10.



©2023 Bestway Inflatables & Material Corp.

All rights reserved

Trademarks used in some countries under license from Bestway Inflatables & Material Corp., Shanghai, China

Exported by Bestway (Hong Kong) International Ltd./Bestway Enterprise Company Limited

Suite 713, 7/Floor, East Wing, Tsim Sha Tsui Centre, 66 Mody Road, Kowloon, Hong Kong

Distributed in North America by Bestway (USA) Inc., 3435 S. McQueen Road, Chandler, AZ 85286, United States of America

Tel: +86 21 69135588

www.bestwayusa.com

Bestway