

# OWNER'S MANUAL

PLEASE READ INSTRUCTIONS CAREFULLY BEFORE USING THIS PRODUCT.

**⚠ WARNING:** Adult assembly required.

- Only for domestic use.
- Only for outdoor use.
- Before using the product, carefully check if there are any leaks or broken parts.
- Do not place on stones, sticks or any sharp objects that may puncture the product.
- Do not kick, throw or sit on the product.
- Keep away from flames and fires.
- Use only under competent supervision.
- Air pump not included.
- Fill the water chamber before inflation.

## CLEANING AND MAINTENANCE

1. After use, use a damp cloth to gently clean all surfaces.

**NOTE:** Never use solvents or other chemicals that may damage the product.

2. Store in a cool, dry place and out of children's reach.

3. Check the product for damage at the beginning of each season and at regular intervals when in use.

## REPAIR

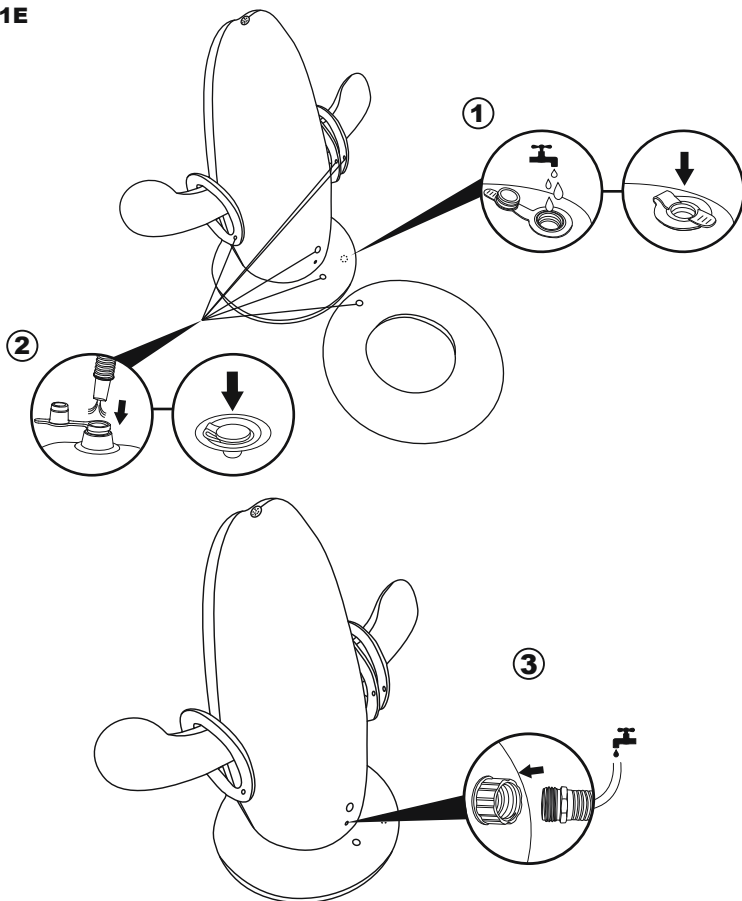
If a chamber is damaged use the provided repair patch.

1. Completely deflate and drain the product.

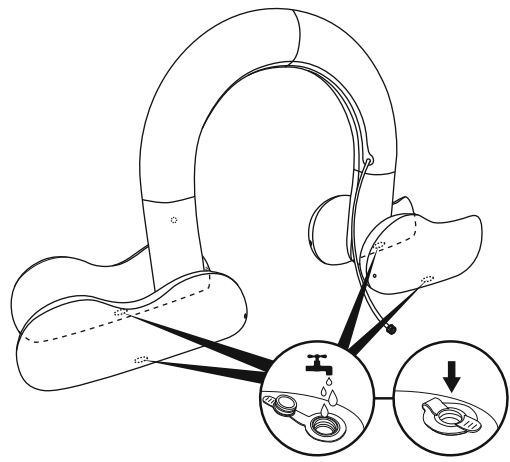
2. Clean and dry the damaged area.

3. Apply the provided repair patch and smooth out any air bubbles.

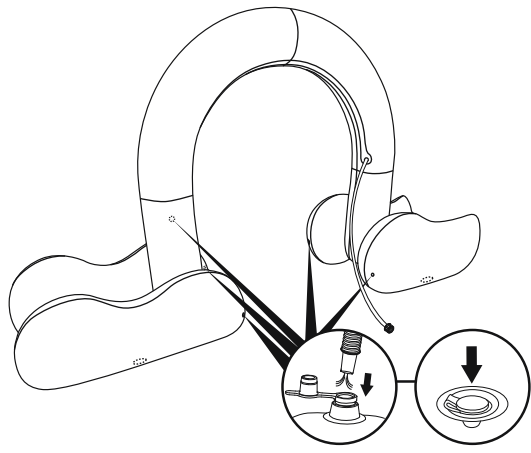
**52381E**



①



②

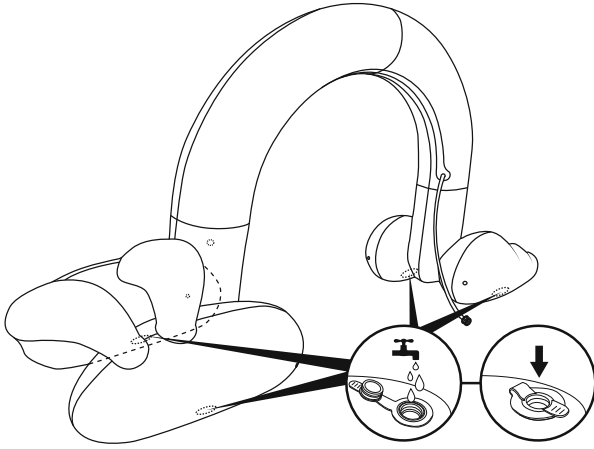


③

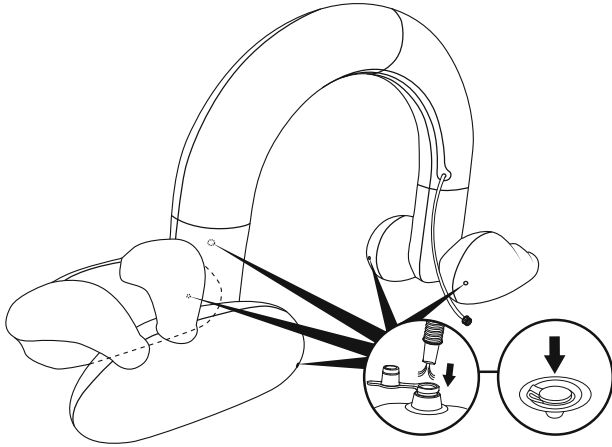


52398E

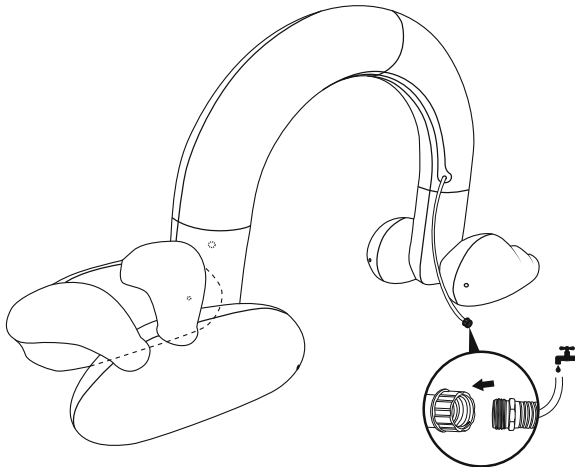
①



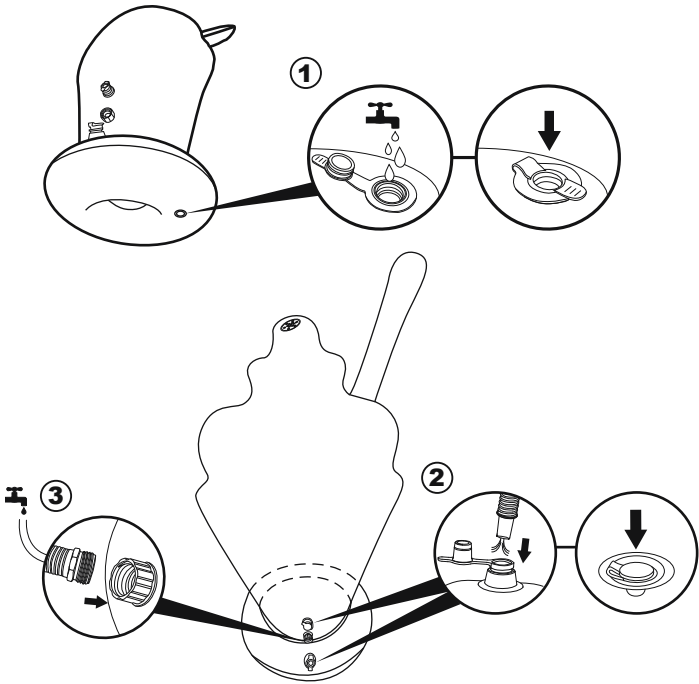
②



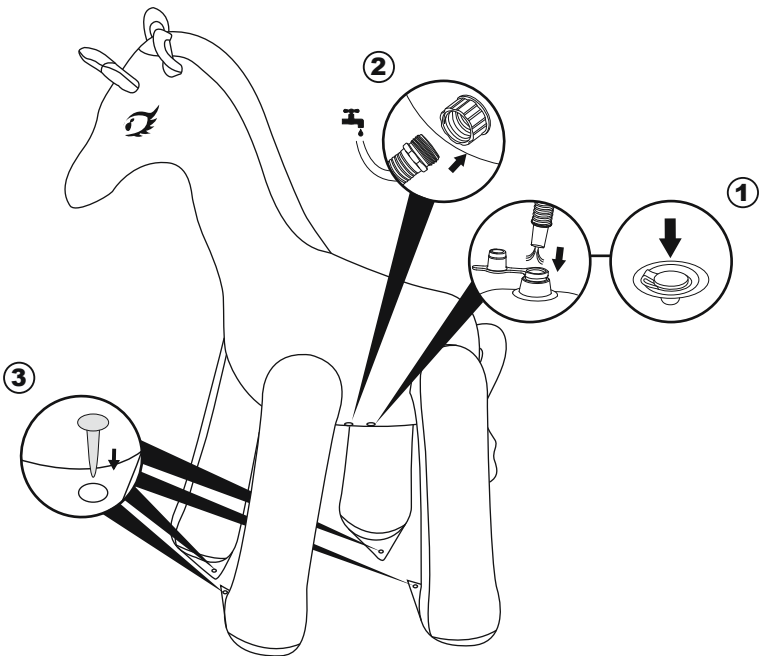
③



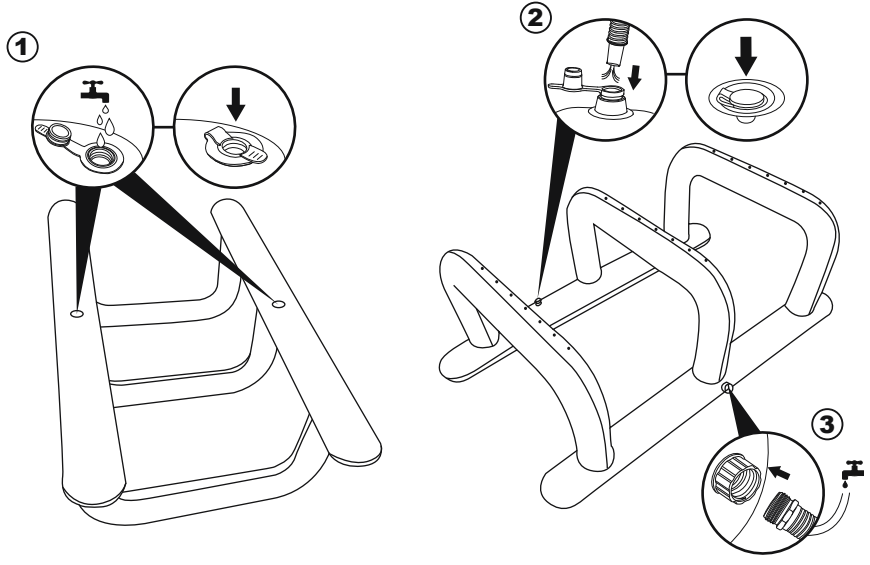
52379E



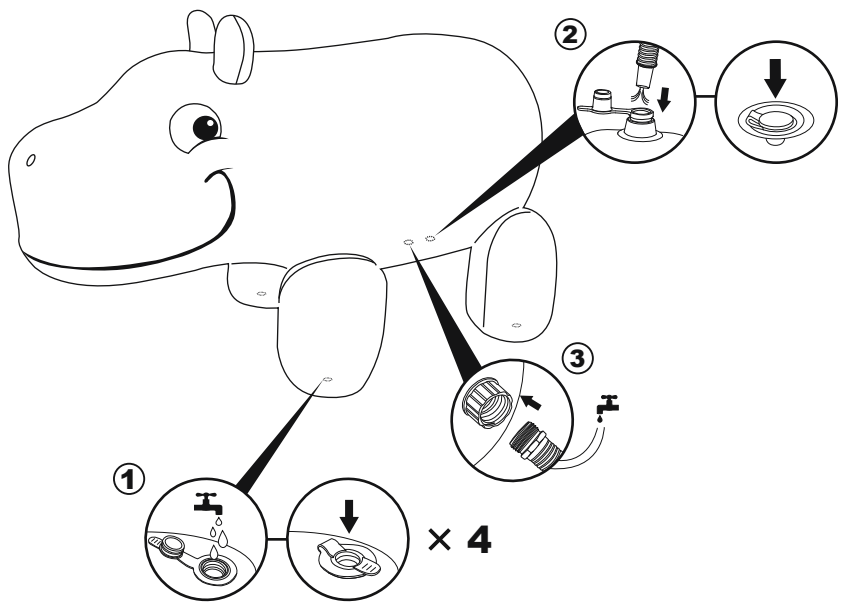
52384E



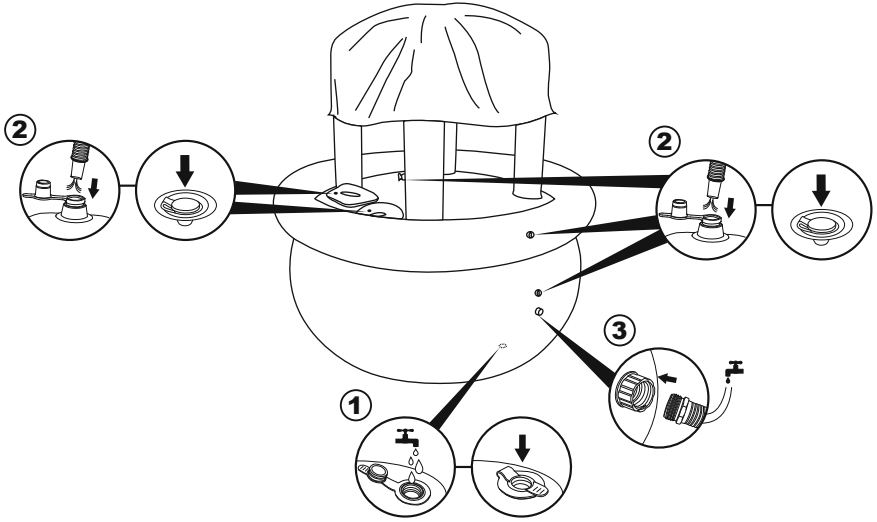
52383E



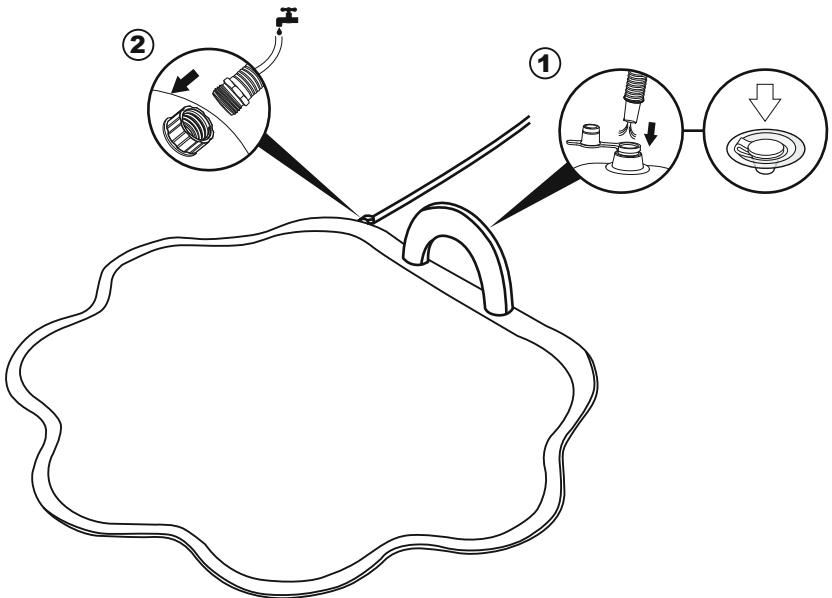
52569E



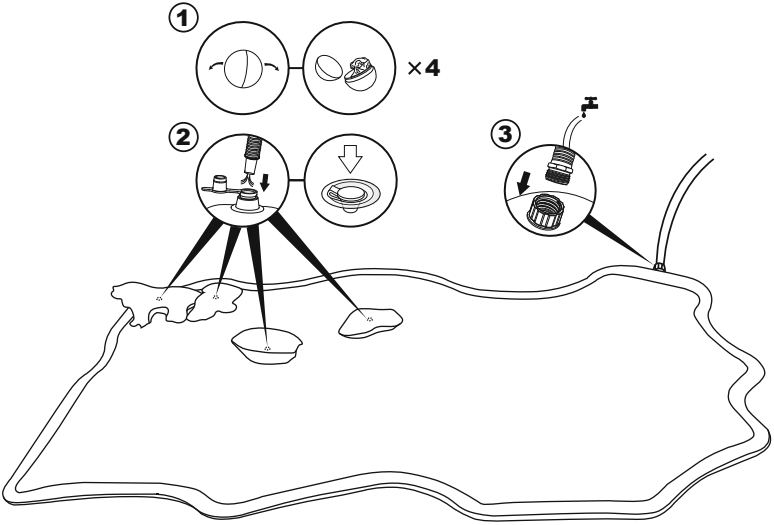
52573E



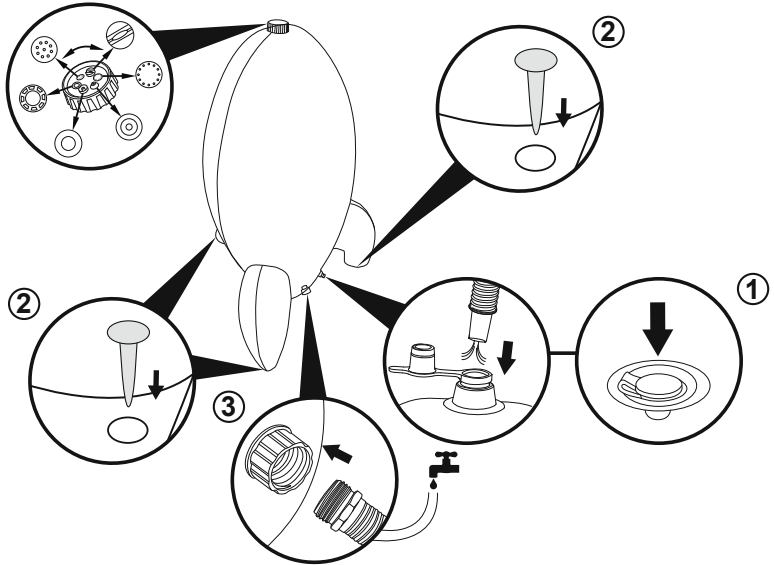
9101EE



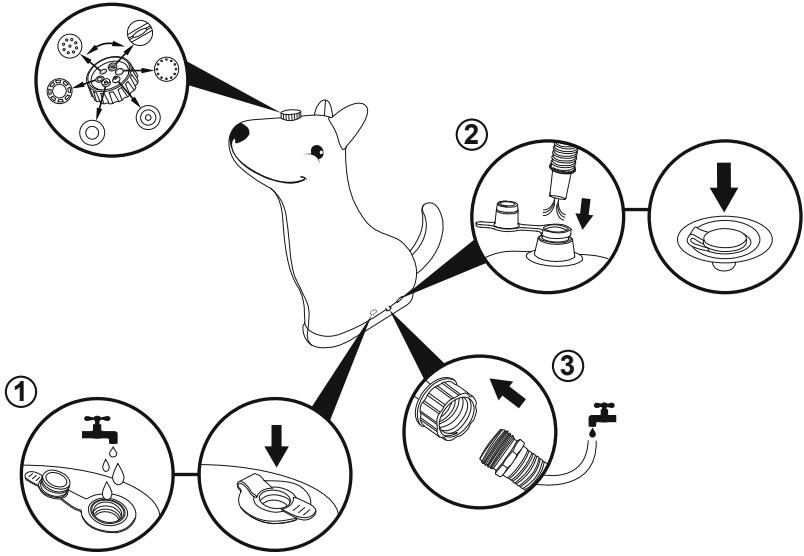
52564E



52572E



52570E



©2022 Bestway Inflatables & Material Corp.

All rights reserved

Trademarks used in some countries under license from Bestway Inflatables & Material Corp., Shanghai, China

Exported by Bestway (Hong Kong) International Ltd./Bestway Enterprise Company Limited

Suite 713, 7/Floor, East Wing, Tsim Sha Tsui Centre, 66 Mody Road, Kowloon, Hong Kong

Distributed in North America by Bestway (USA) Inc., 3435 S. McQueen Road, Chandler, AZ 85286, United States of America

Tel: +86 21 69135588

[www.bestwayusa.com](http://www.bestwayusa.com)

**Bestway**