

Bestway®

FLOWCLEAR™

©2022 Bestway Inflatables & Material Corp.

All rights reserved

Trademarks used in some countries under license from Bestway Inflatables & Material Corp., Shanghai, China

Exported by Bestway (Hong Kong) International Ltd./Bestway Enterprise Company Limited

Suite 713, 7/Floor, East Wing, Tsim Sha Tsui Centre, 66 Mody Road, Kowloon, Hong Kong

Distributed in North America by Bestway (USA) Inc., 3435 S. McQueen Road, Chandler, AZ 85286, United States of America

Tel: +86 21 69135588

www.bestwayusa.com

OWNER'S MANUAL

Model No.58649E

SAFETY WARNING

When installing and using this electrical equipment, basic safety precautions should always be followed, including the following:

- (1) READ AND FOLLOW ALL INSTRUCTIONS.
- (2) Ensure that children do not attempt to access cleaner while it is operating.
- (3) The cleaner must only be supplied at safety extra-low voltage in accordance to the marking applied on it.
- (4) If an USB charging adaptor (not included) is used, make sure to connect it to the power source through a residual current device (RCD) / a ground fault circuit interrupter (GFCI). If in doubt, consult a qualified, professional electrician.
- (5) The cleaner is designed to clean the swimming pool, SPA.
- (6) Please use the original batteries and USB Line when using.
- (7) Only charging it when the cleaner is power off.
- (8) Put the cleaner into a clean and dry place. Do not expose it under the sun, or close to explosive.
- (9) The filter bag is easy to be broken when there is sharp substances under water.
- (10) Do not close to the vacuum head when it is working, due to its suction power, especially for the human body, animals, hairs or clothes.
- (11) Do not leak the lubricant oil, and it causes water polluted.
- (12) Cleaner working conditions:
 - (12-1) Water depth from 50cm to 256cm
 - (12-2) Water temperature: 4°C(39.2°F)-35°C(95°F)
- (13) SAVE THESE INSTRUCTIONS

Above warning and cautions are not intended to incorporate all possible instances for risks and/or severe injury. Pool/spa owners should always exercise intensive caution and common sense when operating the cleaner.

This device complies with part 15 of the FCC Rules. Operation is subject to the following two conditions:

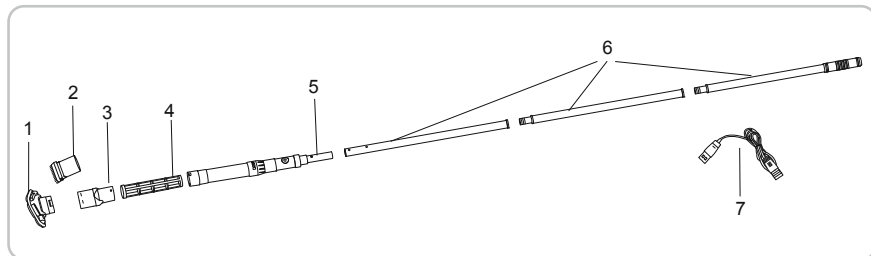
- (1) This device may not cause harmful interference, and (2) this device must accept any interference received, including interference that may cause undesired operation.

OPERATING WARNING

NOTE: When fully charged, the charging indicator will show a green light.

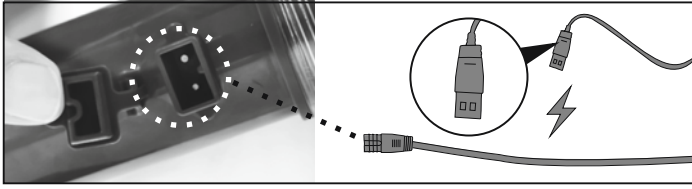
NOTE: Charge the cleaner 5-6 hours prior to the first use. Normally cleaner can be operated about 50 minutes after fully charged.

PARTS LIST

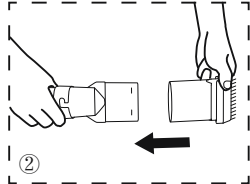
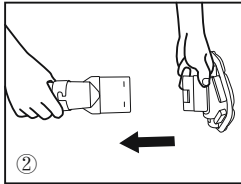
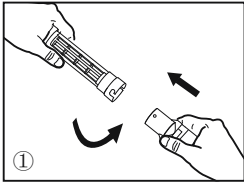


INSTALLATION

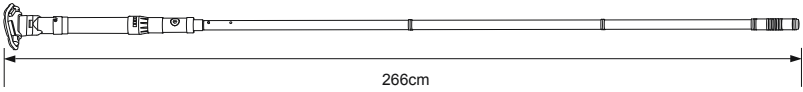
1.



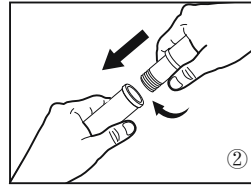
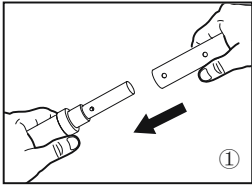
2.



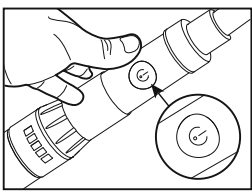
3.



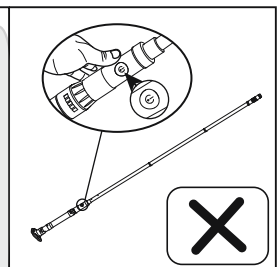
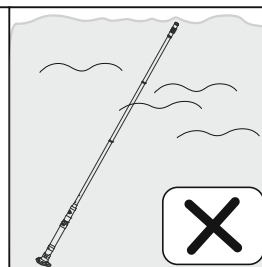
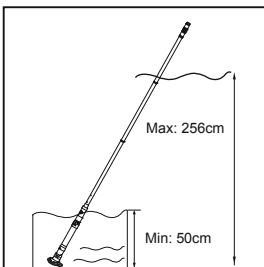
4.



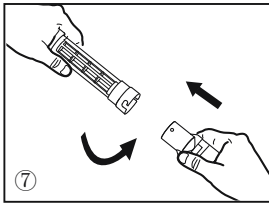
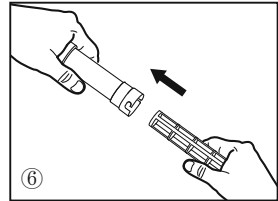
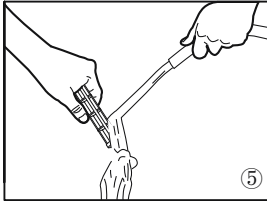
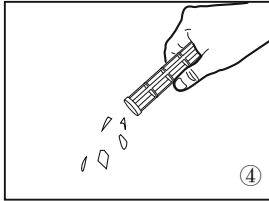
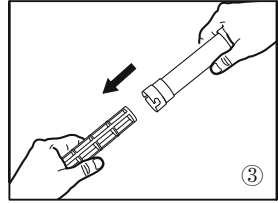
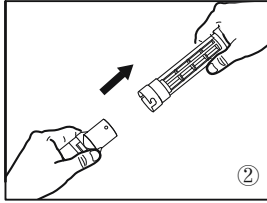
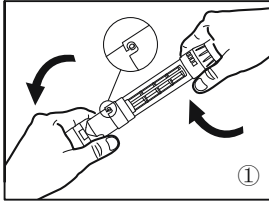
5.



6.



HOW TO CLEAN THE PRODUCT



TROUBLESHOOTING

Problems	Probable Causes	Solutions
Machine does not work	Dead battery	Recharge, it can operate normally for 50 minutes after charging.
	Battery damage	Contact dealer for replacement Warning! Please purchase original lithium batteries for replacement to avoid damage to the cleaner.
Too little suction	Please check the battery level	Recharge, it can operate normally for 50 minutes after charging.
	Please check the garbage bag capacity	Clean up excessive garbage in the net bag in time
Abnormal noise	Please check the motor impeller	Unscrew the suction head to clean the foreign matter at the impeller
	Motor impeller is broken	Return to the shop to get assistance
The cleaner cannot be charged	Battery damage	Contact dealer for replacement Warning! Please purchase the original lithium battery for replacement to avoid damage to the cleaner.
	Damaged charger	Replace the charger
	USB charging cable is damaged	Contact dealer for replacement Warning! The wrong charger will cause damage to the machine, battery, and wire. There is no warranty in this case.